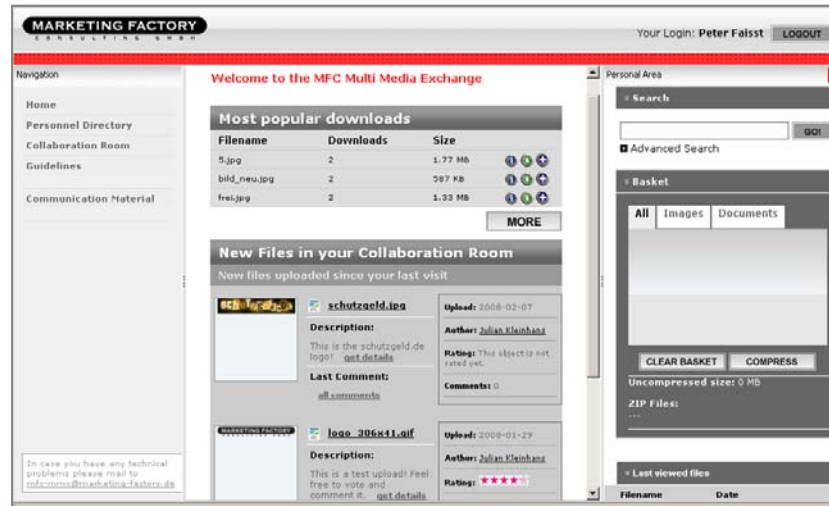




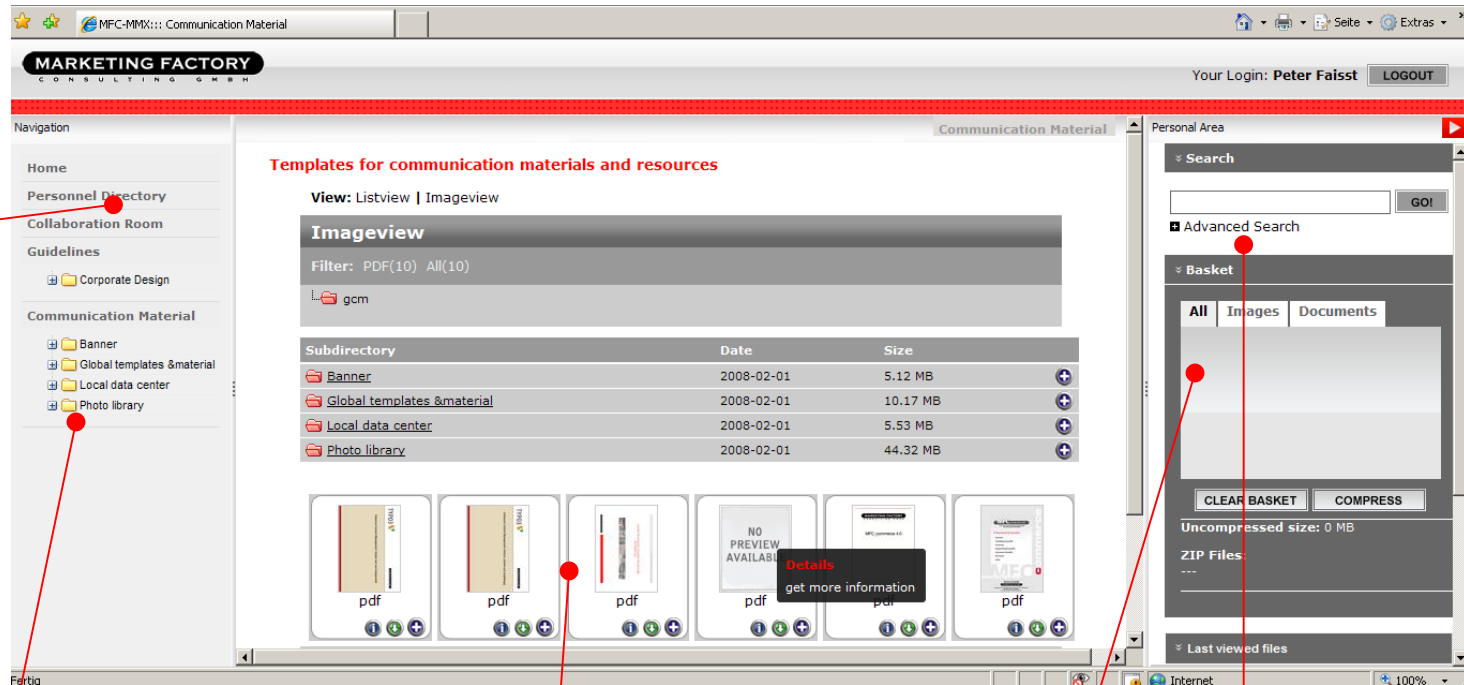
## **MFC-MMX**

The smart way to share resources online

▶ Basic benefits of the MFC Multi Media Exchange



- ▶ Convenient access to all resources
  - ▶ Files e.g. images, documents, presentations, logos, artworks ...
  - ▶ Corporate design files for stationary, business cards, all kind of templates
  - ▶ Background materials and guidelines for publications, press releases, advertising ...
- ▶ Worldwide accessible with nothing than a web browser
- ▶ Hosted on a password-protected Intranet Site with scalable security standards
- ▶ Ensure harmonized branding, consistent communications, regulatory compliance
- ▶ Reduce production and mailing costs
- ▶ Easy accessibility for managers and external agency partners
- ▶ Opportunity to upload, share, and vote for best practice online



main menu

tree navigation for direct access to files

direct link to global templates and material with Preview as a thumb nail or list view for all files

Icons for detailed information "on click"

your basket contains all the folders and files which you would like to download later. Tool tips are available by moving your mouse over the Info and Recycle icons.

advanced search  
For a more exact search, multiple filter options are available

The screenshot displays the MFC-MMX web interface. At the top, the logo 'MARKETING FACTORY CONSULTING GMBH' is on the left, and the user's login 'Peter Faisst' with a 'LOGOUT' button is on the right. A navigation sidebar on the left includes 'Home', 'Personnel Directory', 'Collaboration Room', 'Guidelines', and 'Communication Material' (with sub-items: Banner, Global templates & material, Local data center, Photo library). The main content area is titled 'Communication Material' and shows 'Templates for communication materials and resources'. It includes a 'View: Listview | Imageview' toggle, a 'Filter: PDF(6) All(6)' dropdown, and a directory tree with 'gcm' and 'Global templates & material'. A table lists subdirectories: Logos (2008-02-01, 242 KB), Pack Shots (2008-02-01, 199 KB), and Presentations (2008-02-01, 9.45 MB). Below the table are four file thumbnails, three labeled 'pdf' and one 'NO PREVIEW AVAILABLE'. A 'Personal Area' sidebar on the right contains a search bar, 'Advanced Search' checkbox, a 'Basket' section with 'All', 'Images', and 'Documents' tabs, 'CLEAR BASKET' and 'COMPRESS' buttons, 'Uncompressed size: 0 MB', 'ZIP Files', and 'Last viewed files'.

Filter on file types

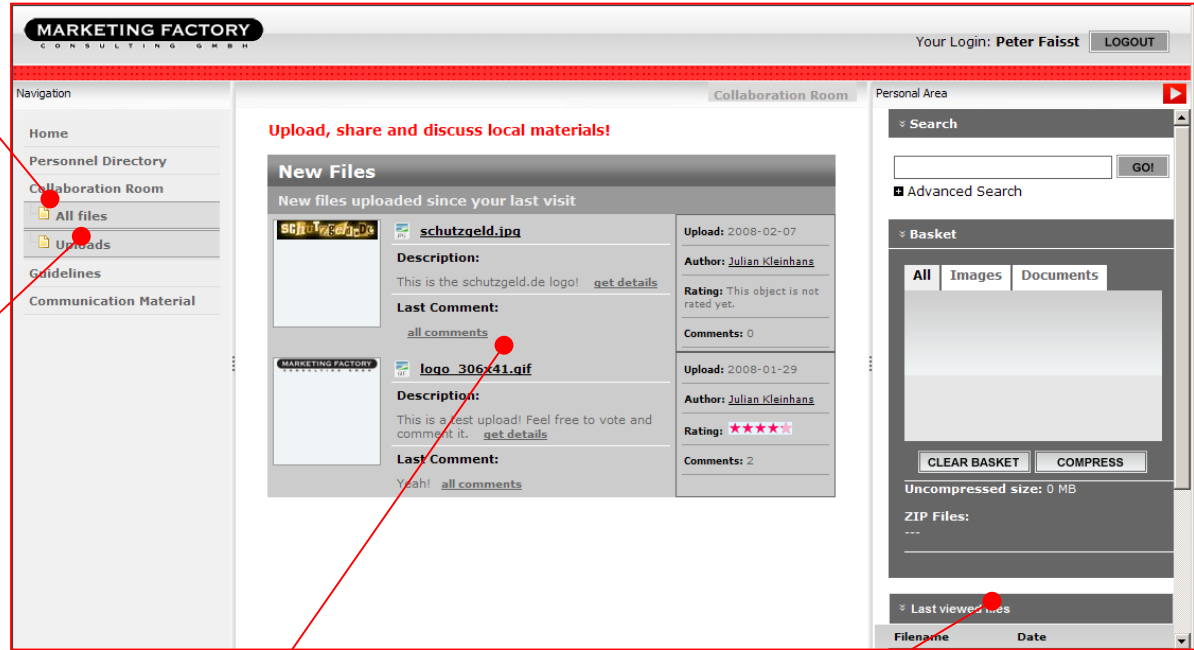
Browse through directory structure

Online preview in your web browser



all uploads and discussion on uploaded material

You can upload files, documents, templates  
Simply via your browser



latest uploads, discussion on uploaded material, voting and more

Personal section with your last viewed files, last downloads, last uploads etc.

You can see a live demo of the new  
MFC-MMX system online, please click:

<http://www.mfc-mmx.de>

A simple registration will be required,  
login & password will come by mail to you

- ▶ MFC-MMX is based on the CMS TYPO3 as a license free open source framework
  - ▶ No license fee
  - ▶ Established standard software
  - ▶ driven by a huge community
- ▶ We offer MFC-MMX as an ASP (application service providing) service
  - ▶ onetime fee for the initial installation and a full customizing on your demands
  - ▶ monthly flat fee for hosting & providing „all inclusive“ at the agreed data transfer volume you may need
  - ▶ Hosting in our 1<sup>st</sup> quality data center at Colt Telecom in Duesseldorf
    - ▶ Excellent peering to all providers worldwide
    - ▶ 7/24 system management if needed
- ▶ Ask for a detailed quote – see contact data on the next page
- ▶ Enjoy our live demo at [www.mfc-mmx.de](http://www.mfc-mmx.de)



**MARKETING FACTORY**  
CONSULTING GMBH

Marketing Factory Consulting GmbH  
Stephanienstraße 36  
40211 Düsseldorf

Tel +49 (0)211 / 36 11 76 - 0

Tel +49 (0)211 / 36 11 76 - 99

[info@marketing-factory.de](mailto:info@marketing-factory.de)

[www.marketing-factory.de](http://www.marketing-factory.de)